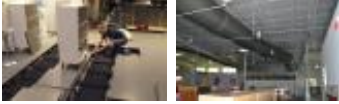


## Applications | Educational, Offices and Comfort in general



Underfloor  
ducting



[Click on the picture to read the case study](#)

## Educational, Offices and Comfort in general

Education facilities, office environments and other sedentary types of environments are a common application for FabricAir ducts. In these applications ceiling heights are typically low, and it is therefore critical to pay close attention to the elimination of drafts. FabricAir will help lead you in the right direction and suggest the best solution depending on any unique requirements that your project has.

### Benefits

- ✓ [A versatile system design](#)
- ✓ [Underfloor Fabric Duct Replaces Metal With Superior Results](#)



In the Lila Cokrell Theater I didn't think that there was anything that was negative in this project.

[Read more](#)

**Wes Stidham**

Shah Smith & Associates, Inc / Austin, Texas

### Most popular products

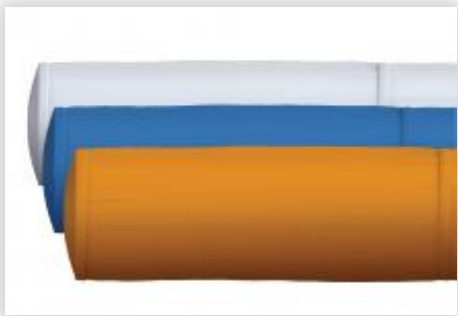
The products listed below are only a suggestion; FabricAir has many fabric types and flow models. Please contact us for the best solution to your application and needs.



### **Combi 70**

The fabric is permeable and comes with a 10 year warranty.

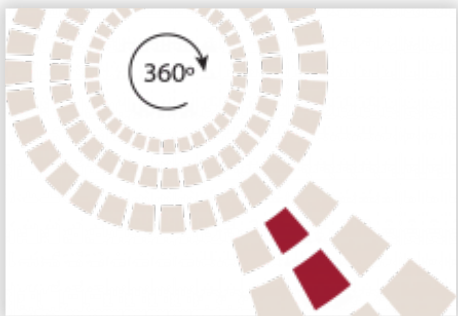
[Read more](#) | [Show all fabrics](#)



### **Trevira CS 100**

FabricAir Trevira CS100 comes with a 10 year warranty.

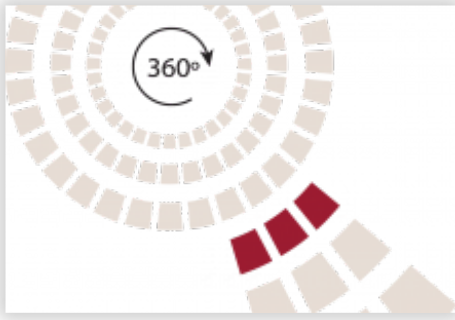
[Read more](#) | [Show all fabrics](#)



### **NozzFlow™**

Air is distributed through venturi shaped plastic nozzles with excellent discharge coefficients.

[Read more](#) | [Show all flow models](#)



### **SonicFlow™**

Air is distributed through lengthwise rows of small orifices.

[Read more](#) | [Show all flow models](#)



### **Type 8 / Type 8 AIO**

Type 8 H-rail suspension is a method of suspending FabricAir ducts. The H-rail, so named because it looks like an H in the cross section, is made out of anodized aluminum, making it an excellent choice for corrosive environments.

[Read more](#) | [Show all suspension types](#)

### **Suggested docs**



[FabricAir® Trevira, 4181](#)



[FabricAir® Combi, 4182](#)

---